

Material

Insulator: PPS UL94V-0

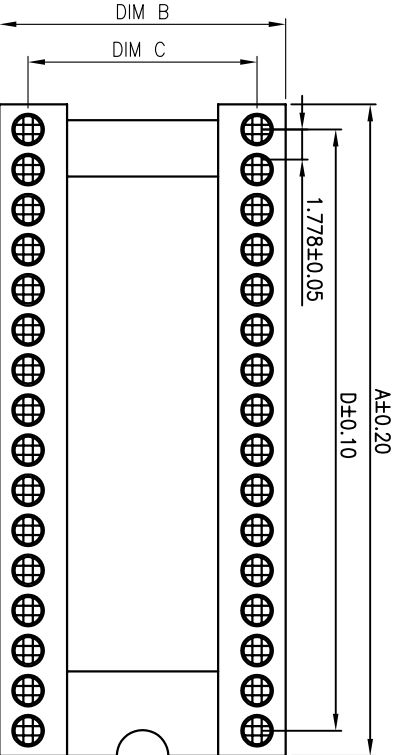
Electrical

Insulation resistance:  $\geq 1\text{KM}$  at  $V=100\text{V}$

Mechanical

Operating temperature(continuous):  $-55^{\circ}\text{C}+125^{\circ}\text{C}$

Soldering temperature:  $+260^{\circ}\text{C}$ , 10s max

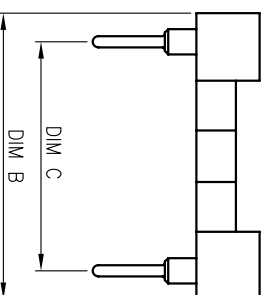
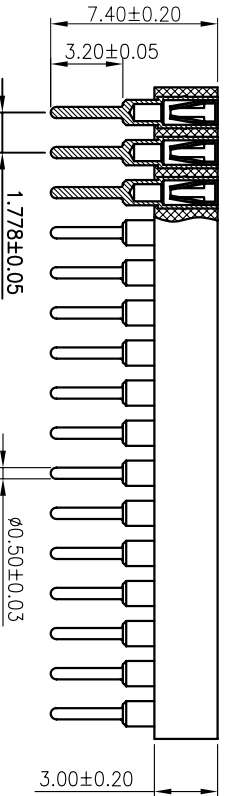


Contact	Dim A	Dim B	Dim C	Dim D
20	18.15	12.70	10.16	16.00
32	28.82	12.70	10.16	26.67
24	21.71	17.78	15.24	19.56
42	37.71	17.78	15.24	35.56
54	48.38	12.70	10.16	46.23
64	52.27	21.59	19.05	55.12

## Ordering Information

3623 30 W XX S XX 074 01

No. of Pins xxxPin  
 Contact Plating  
 G0:0.8U<sup>m</sup> Gold  
 G1:1.1U<sup>m</sup> Gold  
 G2:1.5U<sup>m</sup> Gold  
 G3:2.0U<sup>m</sup> Gold  
 G4:3.0U<sup>m</sup> Gold  
 S0:Gold Flash/Tin  
 SN:tin  
 Length 074=7.4mm



**JILN ELECTRONIC CO.,LTD**

PART NO.

362330WSXX07401

TITLE:

1.778圆孔C座-NPIN L=7.4加长针

REV	DATE	MODIFICATION DESCRIPTION	CHANGE	OPERATION	DRAW	WZG	14.07.22	SCALE	FIT	SIZE	SHEET	PROJ.
A0	2014.04.01	NEW DRAWING		X.X X.XX X.XXX	±0.30 ±0.20 ±0.10	CHECK		UNIT mm	A4	1/1		
				Angle DIM	±3° TOL	APPROVE						

1 2 3 4 5 6 7 8 9